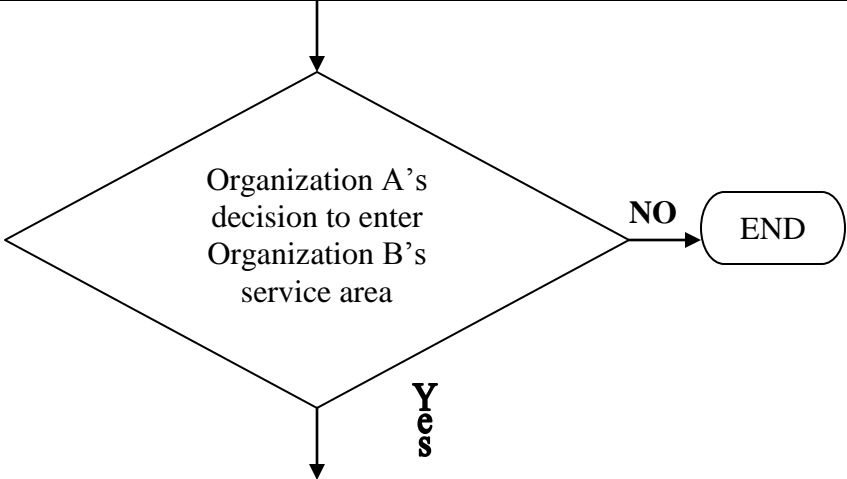
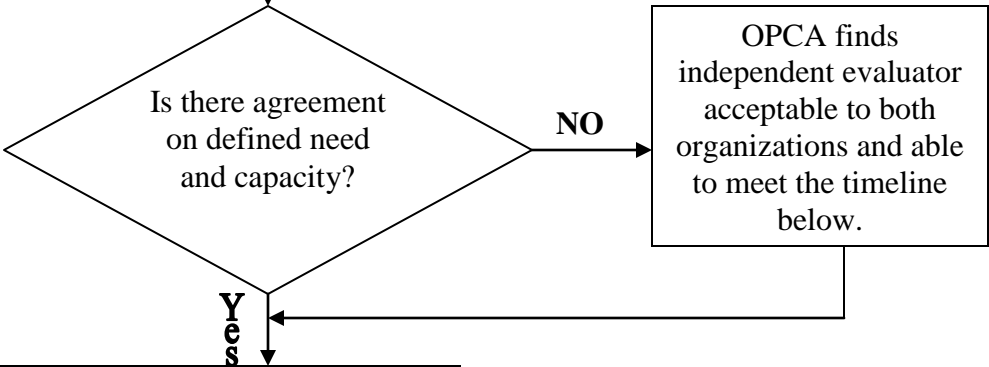


Protocol for Consideration of OPCA Clinic Members and Other Organizations Planning to Serve Overlapping Populations

When Organization A decides to investigate (i.e., contact community members/elected officials) whether or not to enter Organization B's service area, a letter should be mailed to the CEO/ED of Organization B notifying them of the plan to investigate. This protocol applies regardless of funding sources sought for expansion, and can also apply for clinics already in the same market area.



Organization A and B define population's (Medicaid, uninsured, etc) need and existing capacity to meet the need.



OPCA finds independent evaluator acceptable to both organizations and able to meet the timeline below.

Organizations A and B discuss sustainability of each based on need and capacity data. The entire process to define the population's need and capacity should not take longer than 30-60 days unless another timeframe is agreed to by the organizations.

