

## **Fast Facts**

### **Reduced Costs, Better Outcomes: SB 1522 Addresses Psychological & Social Barriers to Health**



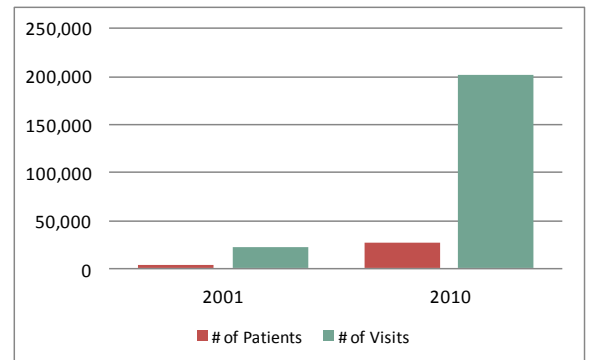
Coordinated Care Organizations (CCOs) will hold health care providers accountable for keeping their patients healthy. And while health outcome metrics for all patients should be the same, **CCO measurement and payment structures must account for the time and resources required** to get and keep highly complex patients healthy.

An accurate comparison of health quality data across providers must account for the **psychological and social barriers** that make it hard for thousands of Oregonians to make good health choices:

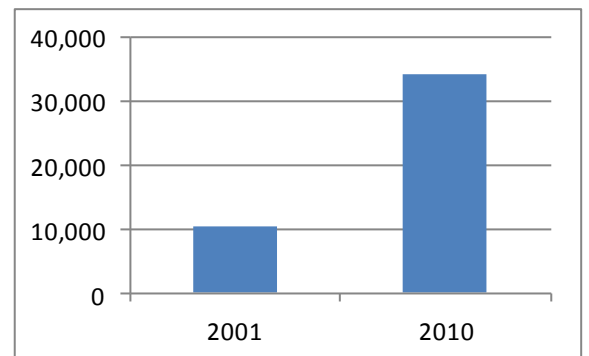
- Physical disability
- Low health literacy
- Lack of transportation
- Rural or social isolation
- Drug & alcohol addiction
- Poverty & homelessness
- Cultural and/or language barriers
- Chronic & debilitating mental illness

Community health centers and other safety-net providers care for a greater proportion of patients who face these barriers, compared to most other providers.

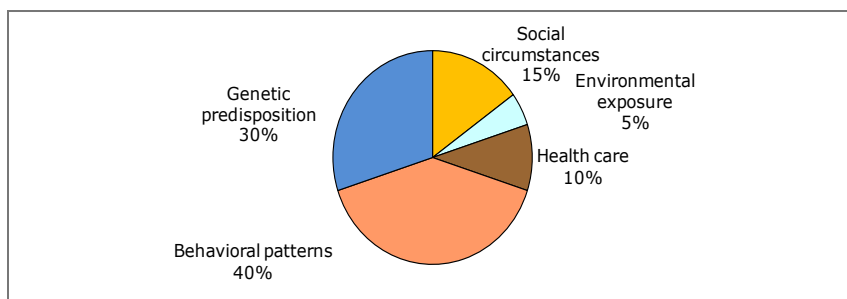
CCOs must make an investment in primary care to help these patients avoid the expensive emergency room visits and hospitalizations that raise overall costs for Oregon's health system. It's imperative that CCOs ensure fair compensation for the providers who spend extra time and resources caring for these highly complex patients.



**Mental Health Patients & Visits  
Oregon Community Health Centers**



**Homeless Patients  
Oregon Community Health Centers**



**Determinants of Health and their Contribution  
to Premature Death**

Psychological and social barriers are major factors in determining a person's health. In fact, research indicates that **fully 60 percent of a person's health status is determined by social circumstances, behavioral patterns and environmental exposure — factors that fall outside the parameters of the traditional health care system.**